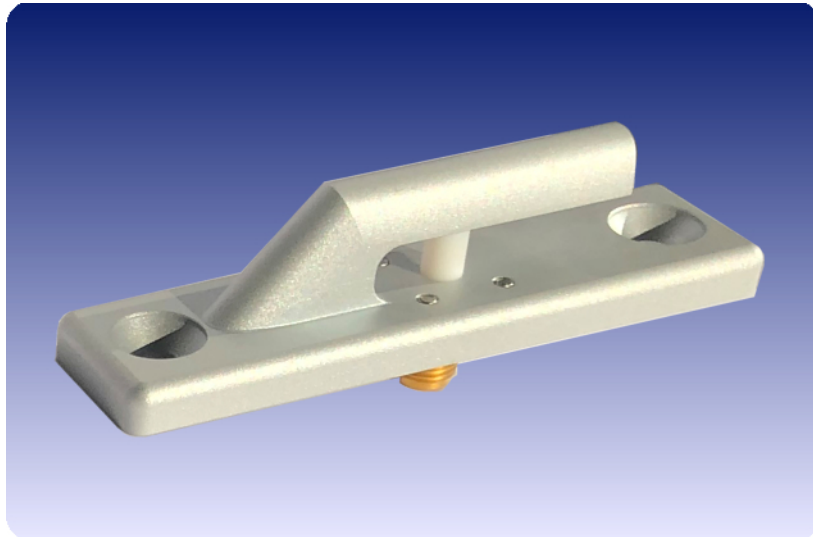


# S-Band Airborne Antenna

S2400A

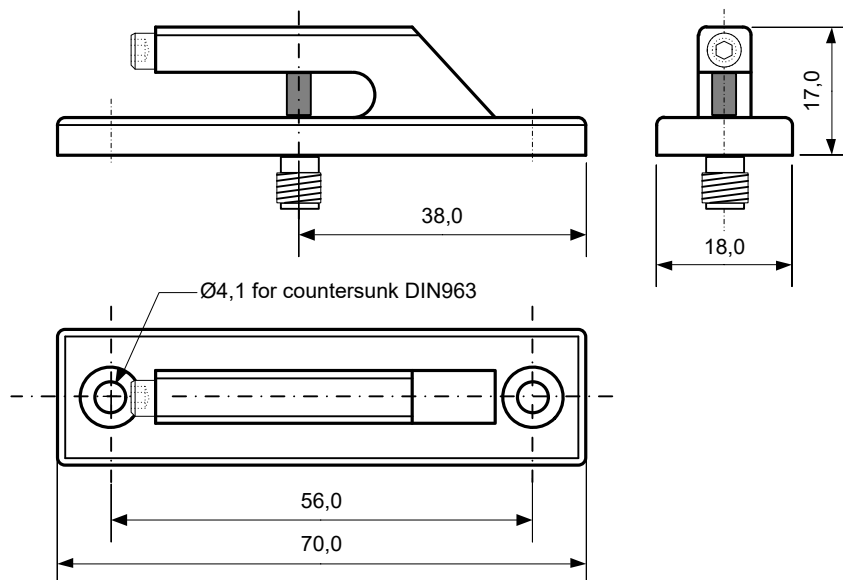


## Highlights

- ➔ Rugged, airborne Design
- ➔ For aircrafts, missile, UAV's
- ➔ 20 W CW
- ➔ omni-directional
- ➔ Wide Temperature range
- ➔ Made in Germany

## Technical Data:

Frequency Range	2.000 to 2.500 MHz
Bandwidth	150 MHz
Gain	0 dBi
Polarization	linear
Input Impedance	50 Ohm
Input VSWR	better than 1.5 : 1
RF-Power	20 Watt cw
RF-Connector	SMA-female
Temperature Range	-65°C to +350°C
Material:	Aluminium
Finish:	SURTEC650
Dimensions	70 x 18 x 17 mm (L x B x H)
Mass	ca. 25 gr.



Specifications subject to change without notice.

